

Cree LED Product Change Notification

Customer Name: XLamp® LED Customers

PCN Reference Number: CreeLED-PCN-5183

Date Issued: July 16, 2021

Please be advised that Cree LED qualified a Major change to XLamp LEDs and that we will begin shipping the affected product with the change 15 days after the PCN Issue Date.

Please review the additional PCN information below.

Affected Product

Table 1 provides a list of products affected by this Major change:

Table 1 Affected Products List

Cree LED Part Number
MCExxx-xx-xxxx-xxxxxx
MKRxxx-xx-xxxx-xxxxxxxx
MLxxx-xx-xxxx-xxxxxx
MTGBxx-xx-xxxx-xxxxxxxx
MX3xxx-xx-xxxx-xxxxxx
MX6xxx-xx-xxxx-xxxxxx
XBxxx-xx-xxxx-xxxxxxxx
XD16xxx-xx-xxxx-xxxxxxxx
XHBxxx-xx-xxxx-xxxxxxxx
XHGxxx-xx-xxxx-xxxxxxxx
XHPxxx-xx-xxxx-xxxxxxxx
XMLxxx-xx-xxxx-xxxxxxxx
XPCxxx-xx-xxxx-xxxxxx
XPExxx-xx-xxxx-xxxxxx
XPGrxx-xx-xxxx-xxxxxx
XPLxxx-xx-xxxx-xxxxxxxx
XQAxxx-xx-xxxx-xxxxxxxx
XQExxx-xx-xxxx-xxxxxxxx
XTExxx-xx-xxxx-xxxxxxxx

Description of the Change

Cree LED is qualifying additional suppliers of the ESD diode for the affected LEDs. The maximum reverse voltage for the affected LEDs will change to 1 V.

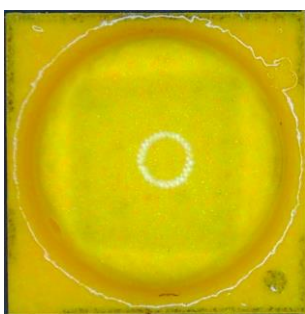
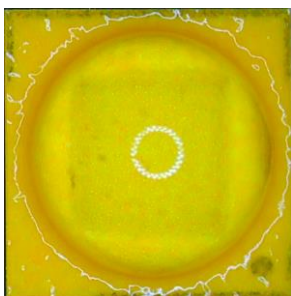
Reason for the Change

This change is being made to qualify additional ESD suppliers required for supply continuity and flexibility.

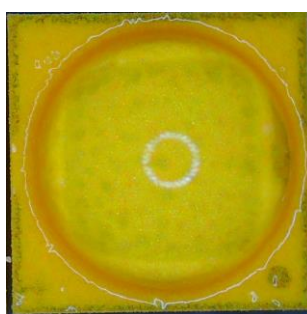
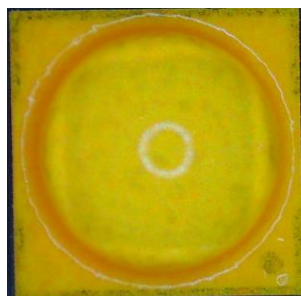
Change Impact on Form, Fit, Function, or Reliability

For the affected products, there might be different appearances to the ESD diode. Examples of valid visual appearances of the ESD diode are shown in the pictures below. This change has no additional impact on the form, fit, function, or reliability of these LEDs.

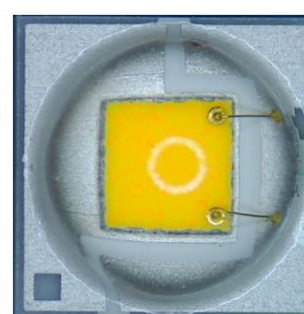
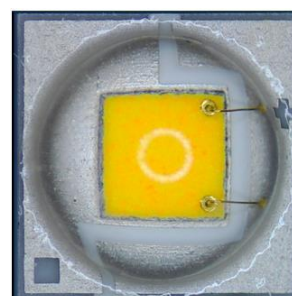
Example Appearance: XT-E



Example Appearance: XP-G3



Example Appearance: XP-E2



Key Dates

Table 2 provides an estimated date for a key PCN Milestone based on information available at the date the PCN was issued. Any updates to this date can be provided by the Cree LED contact listed in Table 3.

Table 2 Key PCN Estimated Date

Estimated First Ship Date:	15 Days After PCN Issue Date
-----------------------------------	------------------------------

Cree LED Contact Information

If you have any questions regarding this PCN please contact:

Table 3 PCN Contact

Cree LED Contact:	Cree LED Customer Service
Cree LED Contact E-Mail:	xlampsales@cree-led.com
Cree LED Contact Phone:	US toll free: 1-844-273-3533 Outside the US: +1 919-313-5301
Address:	CreeLED, Inc. 4400 Silicon Dr. Durham, NC 27703 USA